



Addressing Safety Hazards at the Former Humboldt Smelter Property

December 7, 2021



- Project Overview
- Regulatory Framework
- Planned Actions
- Community Outreach
- Contact Information/Questions

- The Humboldt Smelter Project (herein referred to as the “Project”) refers to the takedown of the smelter smokestack and the partially collapsed converter flue, as well as constructing fencing around the Project area
- The smelter smokestack and converter flue (hereafter referred to as “smelter structures”) have been naturally deteriorating over the years and pose potential safety hazards to trespassers



- In coordination with EPA, ADEQ is managing the Project because of the ability to budget and enact an accelerated timeline
- The Project area exists within the Iron King Mine-Humboldt Smelter Superfund site, but is focused on addressing potential safety hazards associated with the smelter structures
- EPA will continue to address the existing environmental concerns associated with the larger Superfund site with ADEQ involvement

Project Overview



ADEQ has the ability to use State funds from the Water Quality Assurance Revolving Fund (WQARF) to conduct these safety actions that require an accelerated timeline.

EPA's Role

- Oversee the Iron King Mine-Humboldt Smelter Superfund Site
- Work cooperatively with ADEQ
- Complete NHPA/SHPO requirements for the Project
- Ensure the Project is consistent with later Superfund cleanup
- Approve the completion of the Project

ADEQ's Role

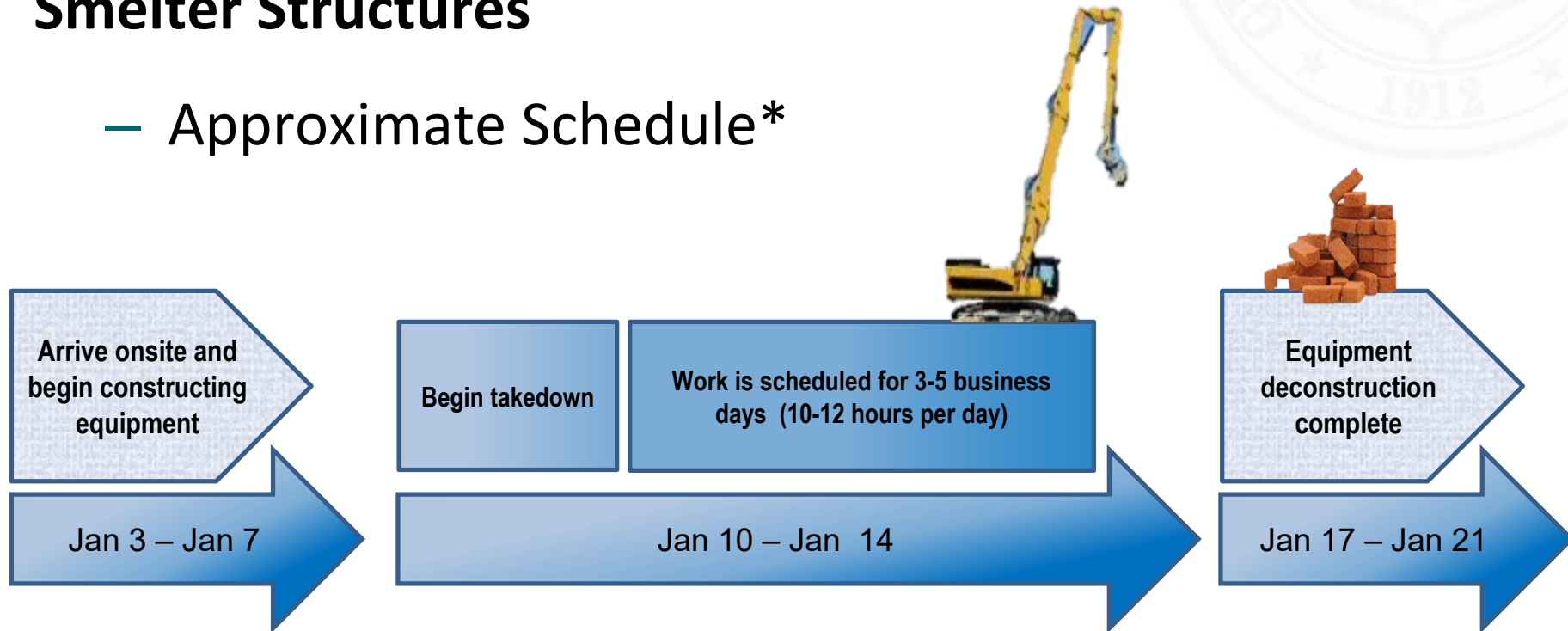
- Fund and oversee the Project
- Work cooperatively with EPA
- Ensure the community is kept informed
- Ensure safety and environmental concerns related to the Project are addressed

The Project plan includes the following actions:

1. Overseeing the controlled takedown of smelter structures
2. Constructing a fence to minimize trespassing
3. Repairing Posi-Shell[®] cover after takedown

Plan Item 1: Overseeing the Controlled Takedown of Smelter Structures

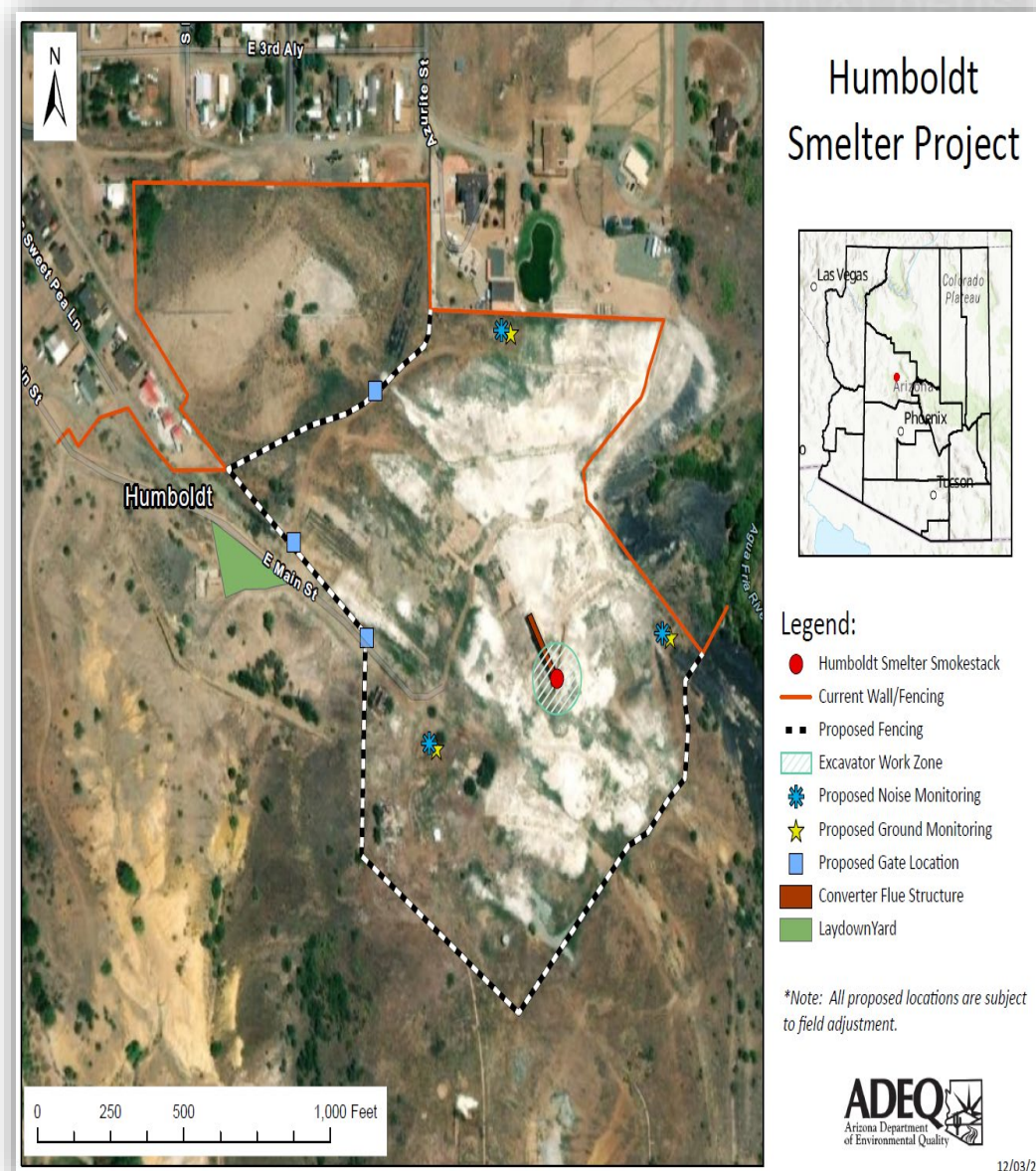
– Approximate Schedule*



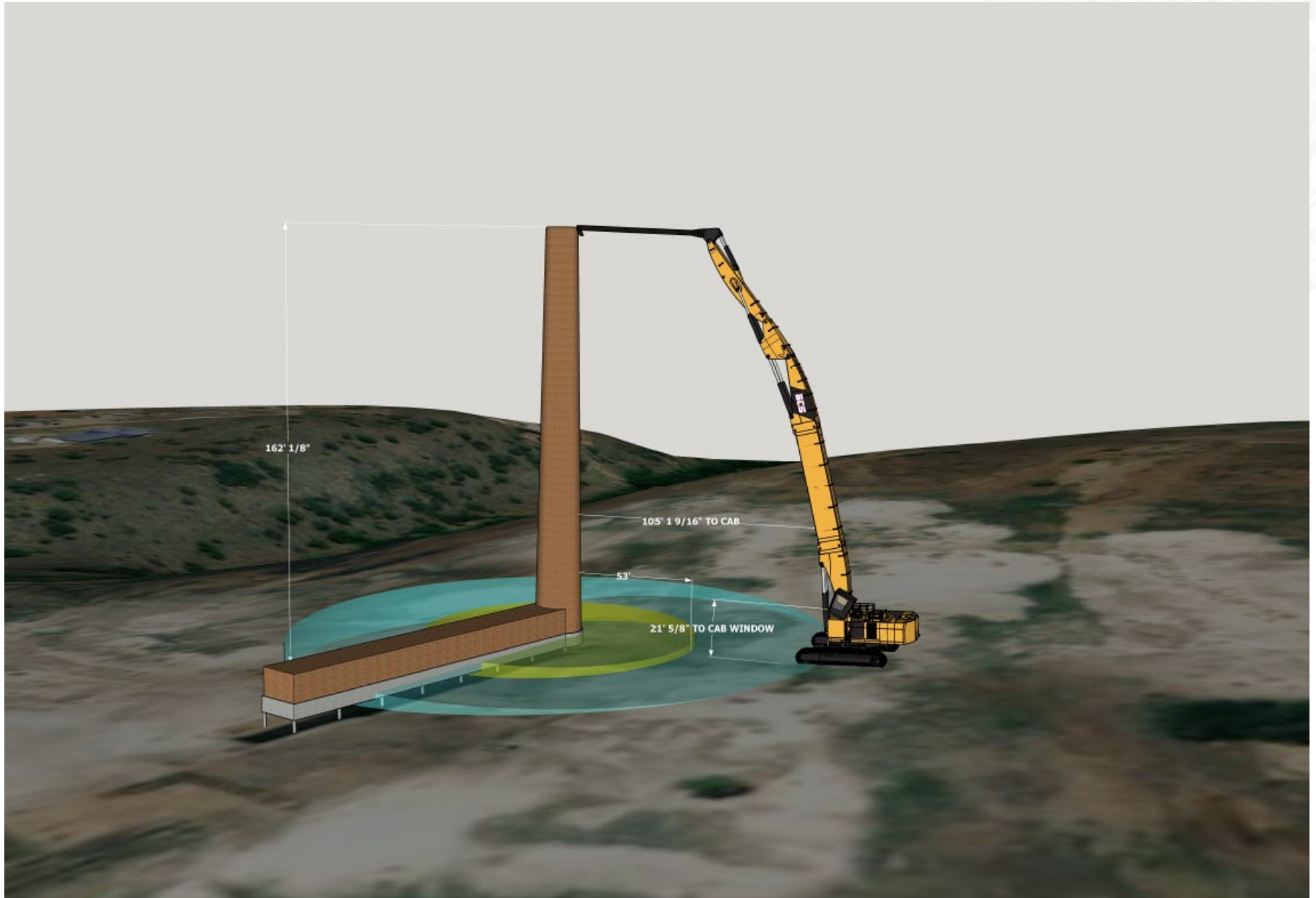
* Schedule may be adjusted if weather conditions preclude safe working conditions. Such weather events might include winds in excess of 15 miles per hour or heavy rain with lightning.

Plan Item 1: Overseeing the Controlled Takedown of Smelter Structures (continued)

- A path will be plated from the existing clean roadway to the smokestack, and to the excavator work pad, to prevent air-borne dust
- A High Reach Excavator will manually takedown the smokestack, with the cab more than 100 feet away from the stack and with a catch fence installed in front of the excavator for added safety
- Bricks will be pushed away from the machinery as the structures are dismantled from top to bottom



Planned Actions



Plan Item 1: Overseeing the Controlled Takedown of Smelter Structures (continued)



- A hydraulic-driven water fan attached to a 4,000-gallon water truck will be utilized for dust control. The hydraulic water fan has a maximum flow of 200 gallons per minute and a throw distance of 300 feet

Plan Item 1: Overseeing the Controlled Takedown of Smelter Structures (continued)

- The remaining attached converter flue structure will be taken down in place from top to bottom
- Noise will be monitored at three locations on-site during the takedown of the structures
- Structure debris will remain and the concrete base of the smokestack will not be taken down
- Full time security will be provided for the duration of the project
- ADEQ will provide air monitoring during the controlled takedown of the structures

Humboldt Smelter Project



Legend:

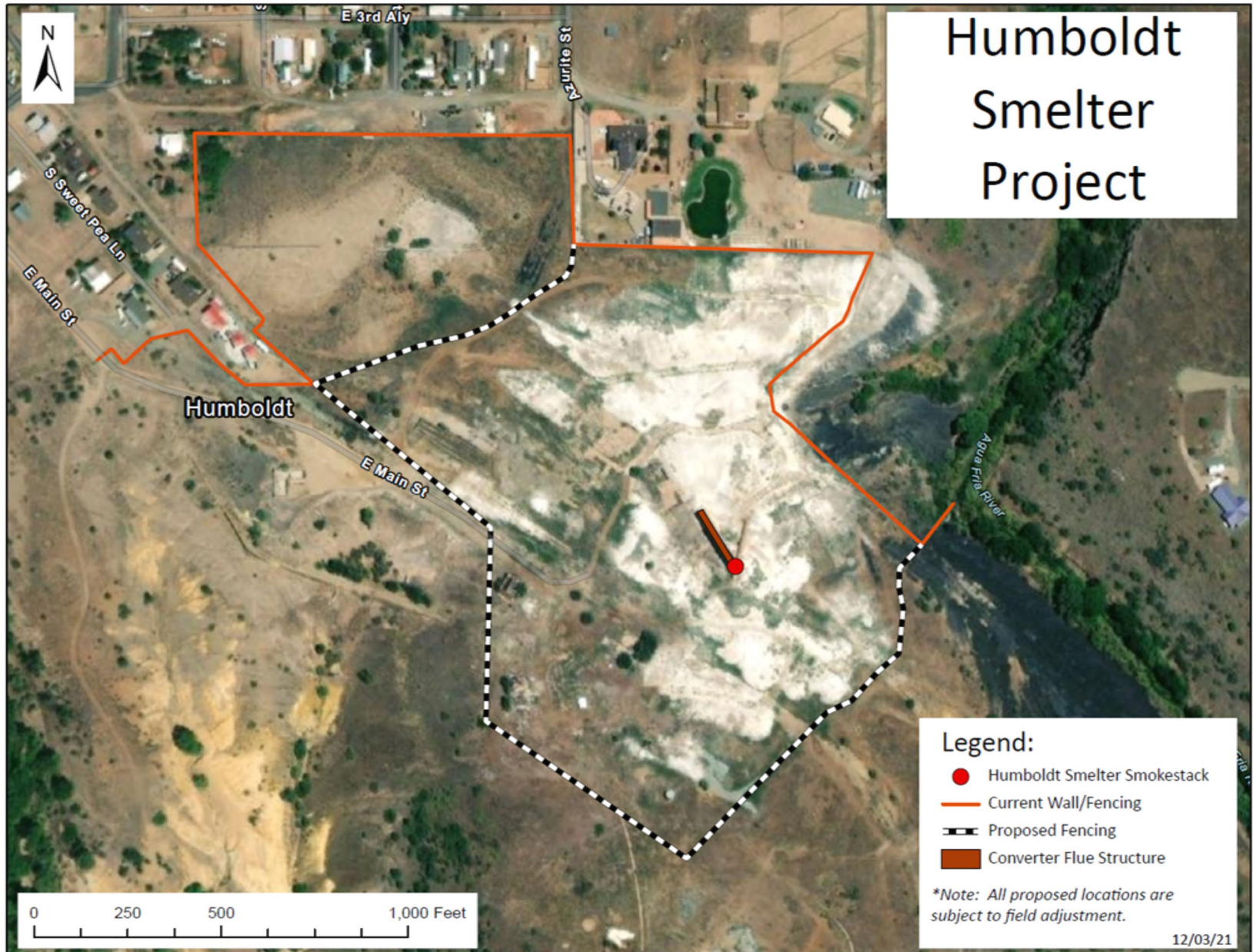
- Humboldt Smelter Smokestack
- Current Wall/Fencing
- Proposed Fencing
- Excavator Work Zone
- Proposed Noise Monitoring
- Proposed Ground Monitoring
- Proposed Gate Location
- Converter Flue Structure
- LaydownYard

**Note: All proposed locations are subject to field adjustment.*

Plan Item #2: Constructing a Fence to Minimize Trespass

- Approximate Schedule:
 - Total of 5-weeks over the duration of project
- Approximately 3,200 linear feet of 6-foot high chain link fencing will be installed with 3-strand barbed wire to minimize trespass
- Locked entrance/egress gates will be installed as necessary to ensure access

Humboldt Smelter Project



Plan Item #3: Repairing Posi-Shell® Cover After Takedown

- In 2019, EPA installed a dust-control cover (Posi-Shell®) over existing dross at the site
- Posi-Shell® is a patented blend of clay binders, reinforcing fibers, and polymers that is spray-applied as a mortar and dries in the form of a thin durable stucco
- If disturbed during project work, the Posi-Shell® cover installed by EPA will be repaired by ADEQ

The following represents Community Outreach for the Project:

- ADEQ and EPA have provided articles for the Dewey-Humboldt Newsletter regarding the former Humboldt Smelter property and the Project
- ADEQ and EPA have provided updates for the Dewey-Humboldt website
- ADEQ and EPA regularly take calls and respond to emails from community members
- ADEQ has developed a dedicated email address for the Project: deweysmelter@azdeq.gov
- ADEQ has developed a dedicated website for the Project: <https://azdeq.gov/node/8522>
- ADEQ has provided Project updates to Mayor Hughes, the Town Manager, the Town Attorney, and Councilmembers
- ADEQ is preparing mailers, information leaflets, and other handouts for the community, to be distributed in December 2021



Questions?

For More Information

Joey Pace, Humboldt Smelter Project Manager
602-771-4818; pace.joey@azdeq.gov

Barbara Boschert, Community Involvement Coordinator
602-292-0218; boschert.barbara@azdeq.gov